

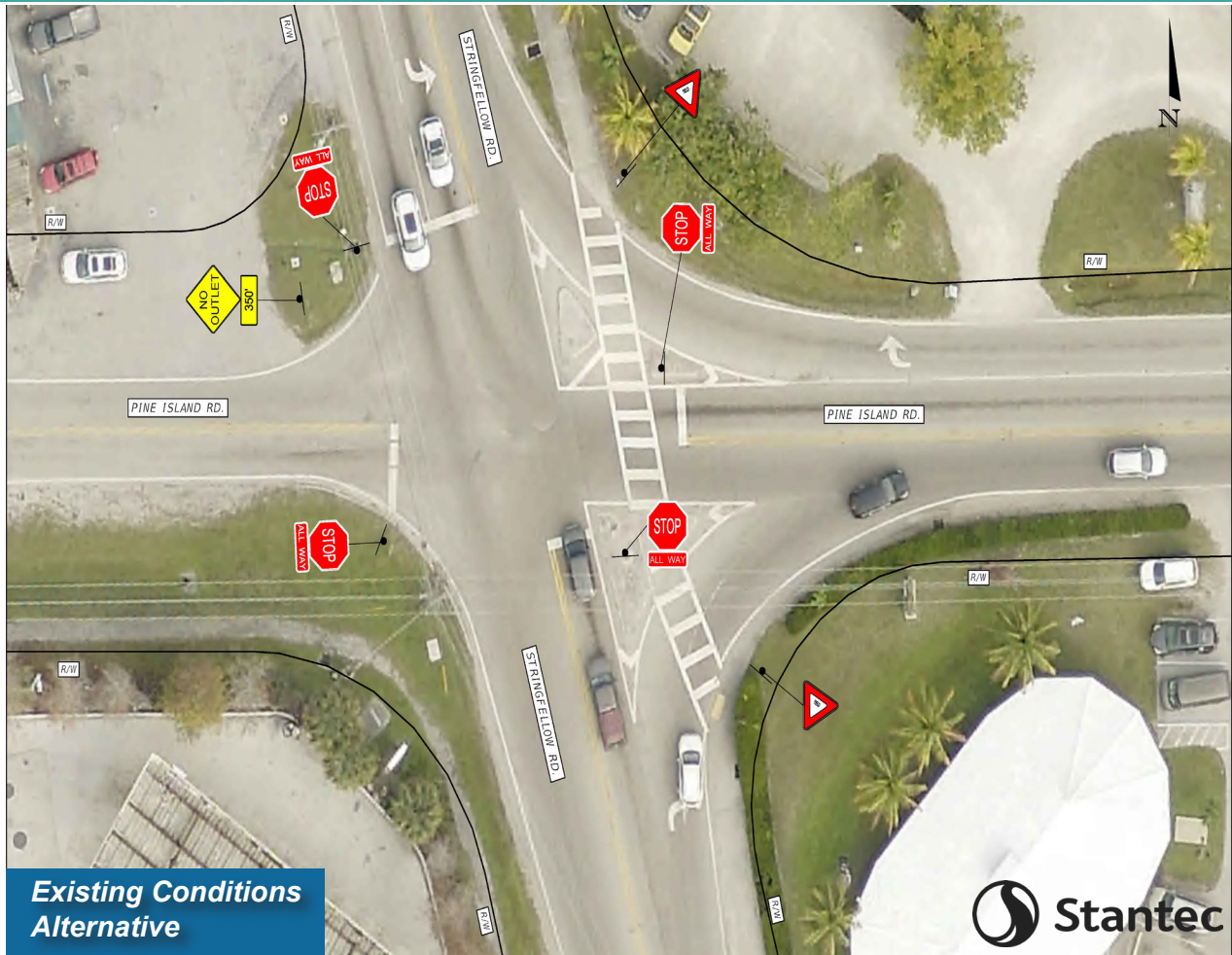
November 2023

The Lee County Department of Transportation (DOT) was requested to evaluate alternatives to improve traffic flow and reduce delays at the intersection of Pine Island and Stringfellow roads. This evaluation was requested by the Lee Board of County Commissioners in July 2022 after comments from Pine Island residents and local civic groups were received regarding delays at the intersection.

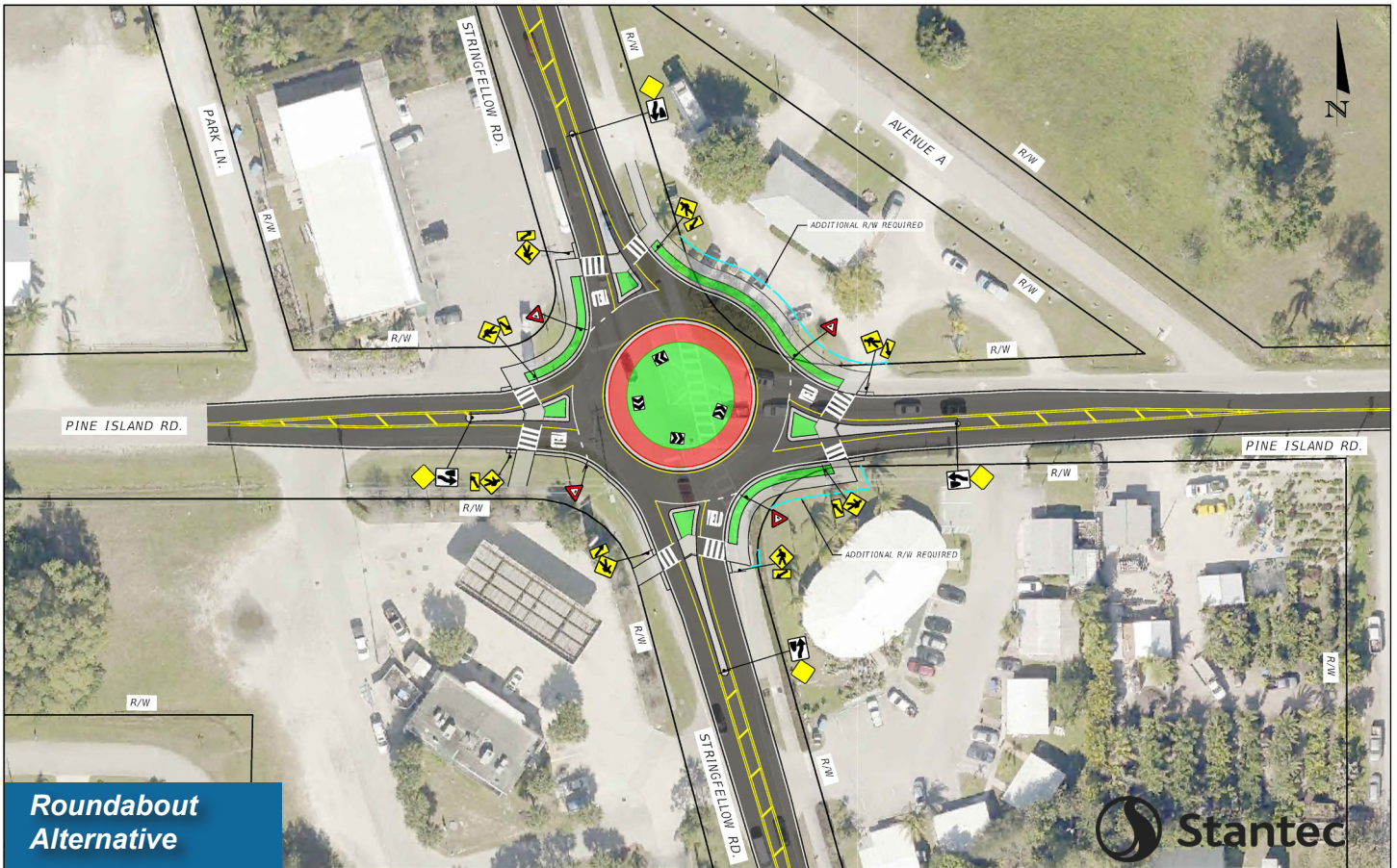
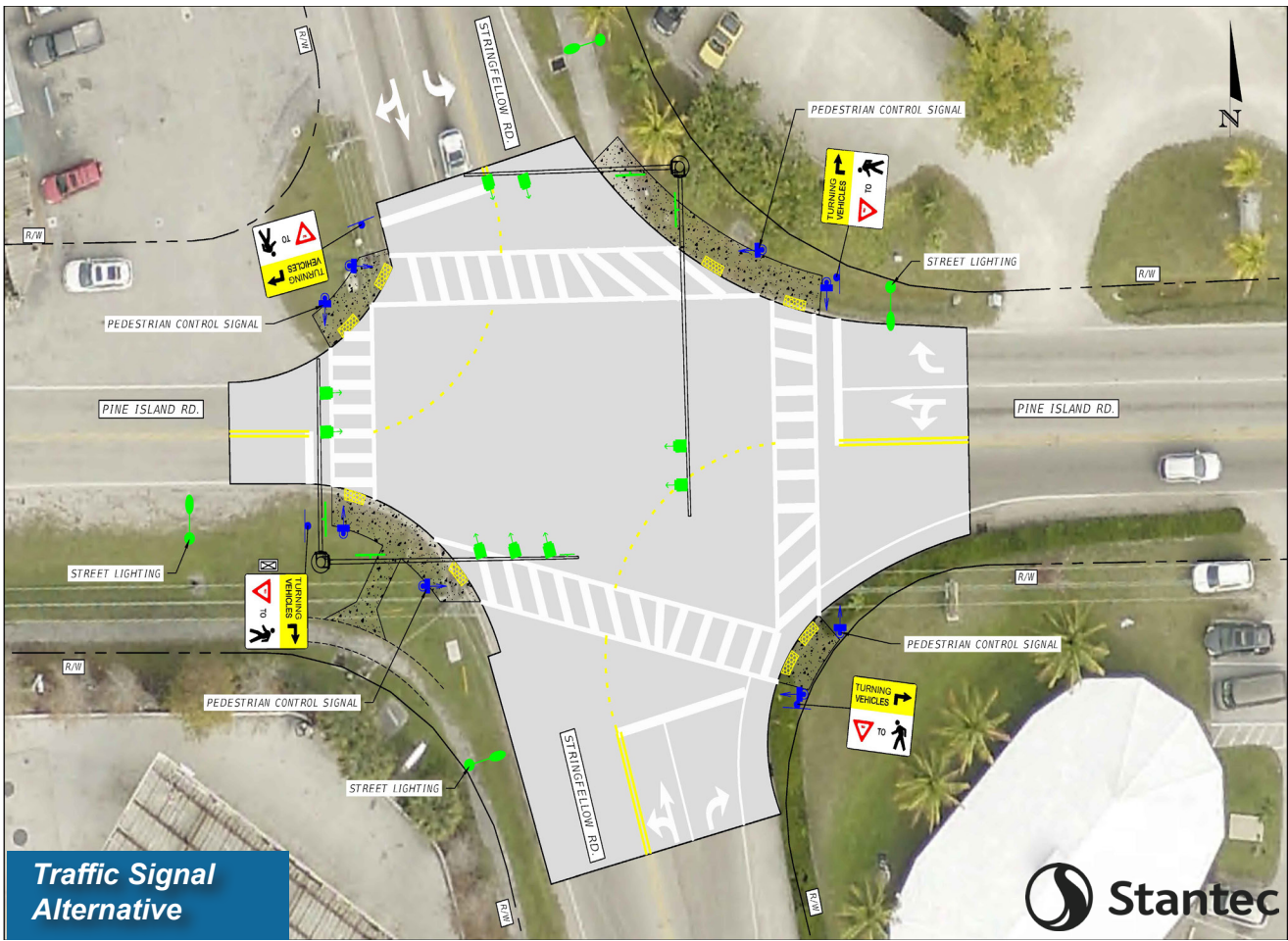
The Pine Island and Stringfellow roads intersection is experiencing traffic volumes in the range of 12,000 vehicles per day in the peak season. Crash data for a five-year period from 2017 to 2021 shows seventeen (17) crashes occurred, with none of the crashes involving pedestrians or bicyclists. All crashes were property damage only, with no recorded injuries.

The County has evaluated this intersection's operations and costs for Existing Conditions (no change), Traffic Signals, and Roundabout alternatives. Potential alternatives are shown below and on the back, but no decisions have been made.

Join Lee County for a Public Information Meeting Thursday, Dec. 7, from 5 p.m. to 7 p.m. at Pine Island Elementary School



The Lee County Department of Transportation invites you to a public information meeting to learn more about the Pine Island and Stringfellow roads Intersection Improvement Evaluation Project. The goal is to listen to comments and answer questions. This is an open-house format with no presentation. The public meeting will be held on Thursday, Dec. 7, 2023, from 5 p.m. to 7 p.m. at the Pine Island Elementary School cafeteria located at 5360 Ridgewood Drive, Bokeelia, FL 33922. If you are unable to attend the meeting, you can provide comments about the project until Dec. 18, 2023, by visiting the project website at www.PineIslandStringfellowIntersection.com.



For questions please contact the DOT's Public Information Consultant, Cella Molnar & Associates, Inc. phone at (239) 337-1071, toll-free at (877) 496-1076 or e-mail to info@PineIslandStringfellowIntersection.